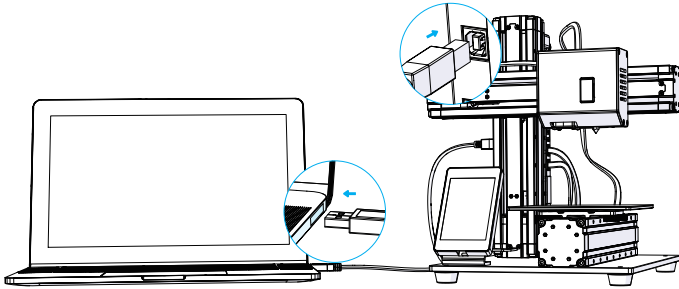


How to Enable the Door Detection Feature


$$\int_0^{\text{Wonderful}} \text{make}(x) dx = \text{snapmaker}$$

- 1 Connect your computer to the machine using the provided USB cable.

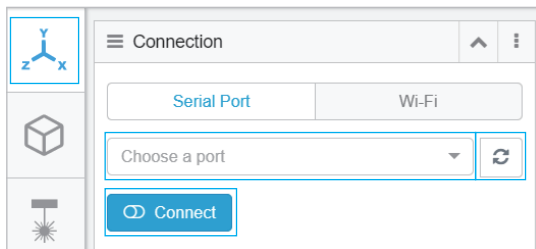


- 2 Turn on the machine.

- 3 - Enter **Workspace**  in the software.

- Refresh the **Serial port** list by clicking  in the **Connection** section.

- Click the drop-down button and select the serial port of the machine, and then click **Connect**.



Note: If you fail to find serial port of your machine, try and install CH340 driver at:

<https://snapmaker.com/product/snapmaker-original/downloads>.

- 4 Select the model and toolhead connected to the software, and then click **Choose**.

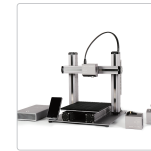
Which model is connected to Snapmaker Luban ?



Snapmaker Original



Snapmaker 2.0 A150



Snapmaker 2.0 A250



Snapmaker 2.0 A350

- 5 Go to **Settings -> Machine Settings -> Turn on Door Detection -> Save Changes**.

